

STEBER 525 DELUXE FISHERMAN

An offshore charger with an incredible 5.6 sq. metres of cockpit space. The large forward storage area and generous side pockets can handle a full range of game gaffs, ropes and all the other equipment you need to have right at hand. The ultimate "Fishing Machine".

SPECIFICATIONS:

Length Overall 5.33 m (17'6")

Beam Max. 2.46 m (8'1")

Beam Transom 2.33 m (7'8")

Approx. Weight 726 kg (1600 lb)

Recommended H.P. 75-200 - ideally suited to twin engines.

Motor Transom Height 51 cm (20")

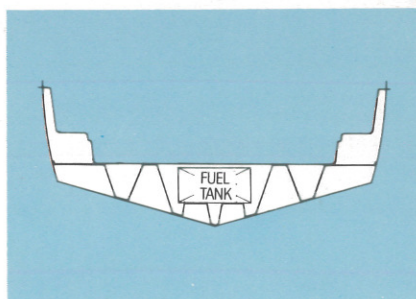
Motor Cut-out Width 97 cm (38")

Freeboard Internal 71 cm (28")

Cockpit Area 5.6 sq. m. (61 sq. ft.)

STANDARD EQUIPMENT: Exclusive one piece anti-glare windscreen incorporating stainless steel safety rail. Four upholstered fold down removable pedestal swivel seats (can be removed to leave a completely clear cockpit floor). Four heavy duty chromed brass rod holders. Giant fish/ice box (lid fits flush into floor to provide completely flat cockpit floor). Heavy duty stainless steel bow rail, heavy duty stainless steel bow roller incorporating spring loaded locking pin, heavy duty bow bollard, heavy duty stem bolt, two large aft cleats, ski hooks, transom drainers, built-in 30 gallon (136 litre) stainless steel fuel tank concealed under floor. Three interior lights for night fishing, fuse box. Seven large well appointed stainless steel handrails. Mechanical steering. Compass. Navigation lights (consisting of port and starboard and riding lights). Four life jackets. Anchor and line.

FEATURES: Complete internal fibre-glass liner forming flotation compartments up to gunwale height. Full fibreglass keel system. Moulded transducer well for depth sounder. Non skid deck and floor surfaces. Instrument panel. Quarter cabin with 4 roomy built-in stowage compartments. Unique sliding hatch for easy access for foredeck. Twin rope hatches to tackle lockers. Roomy built-in side pockets. Separate locker for battery and electrical gear. Completely self-draining cockpit with floor surface 4" above waterline with two large port and starboard scuppers. Twin sized



moulded self-draining motor well with safety tread transom trim. Depth from floor to top of coaming 28", thigh high for safety.

OPTIONS: Bimini top, tonneau cover.

COLOURS: Beige, Golden Yellow, Sapphire Blue, Tangerine, White. Any combination of these colours may be used on hull or deck. Interior beige. Black waterline moulded in.

