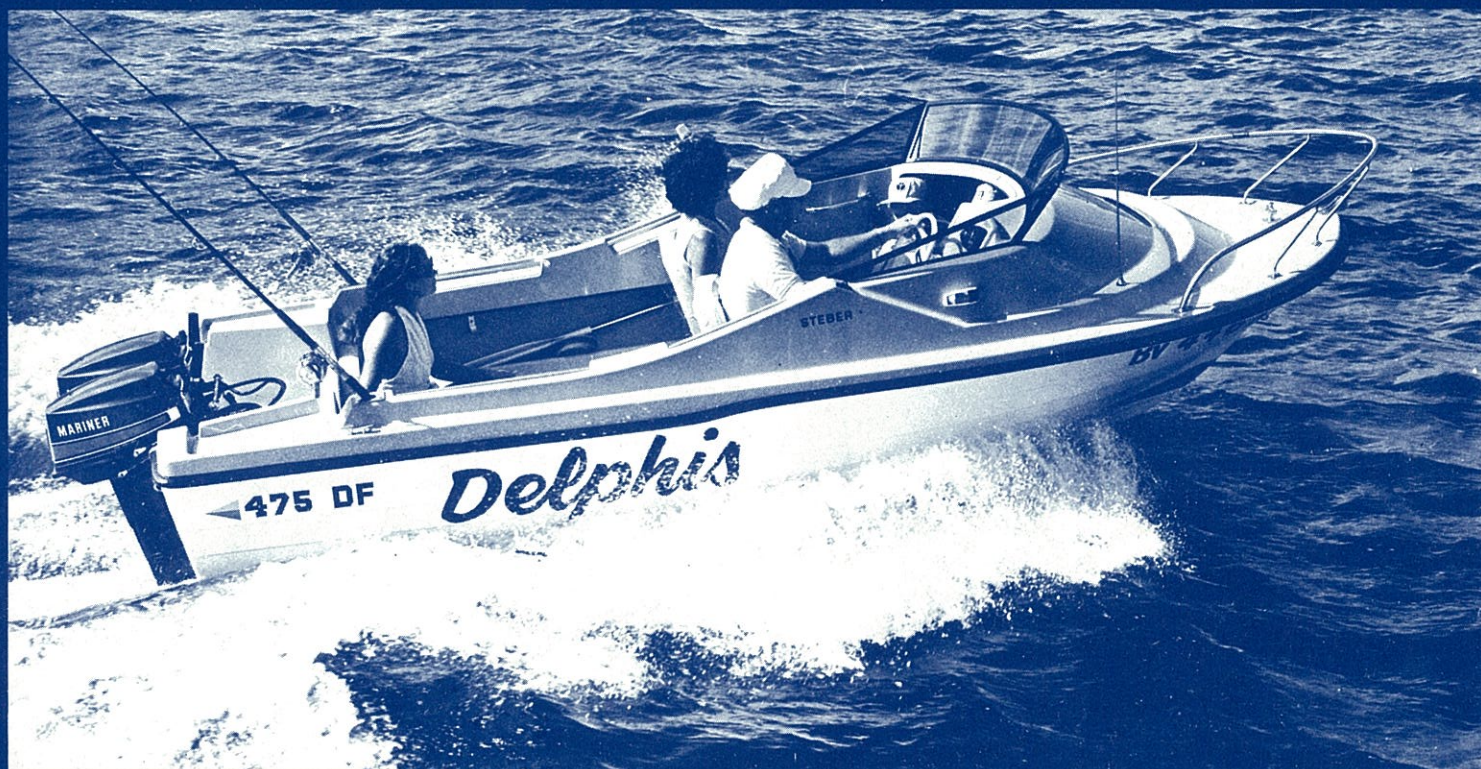


# STEBER 475

A superb deluxe fishing boat,  
acclaimed by the experts



## Read what they say...

### DESIGN

"... As for the 475 DF itself, we can only say that this success couldn't happen to a nicer boat. Any time a designer departs from a standard formula it's interesting; sometimes innovation doesn't work out — but this time it has succeeded brilliantly..."

Mike Law Australian Sea Spray

### COMFORT

"... perhaps the most distinctive feature of the 475 is its forward-tilted screen, and this works beautifully. There's no wind in your face, and any spray that does go flying — and very little did in our test — is carried clear..."

Mike Law Australian Sea Spray

### VALUE

"... It is also the most fully-equipped small boat on the market, with everything — but everything — standard. Steber has decided to can the options game, and give customers what the Japanese car makers give them — a complete product, with everything the typical user will want supplied and fitted..."

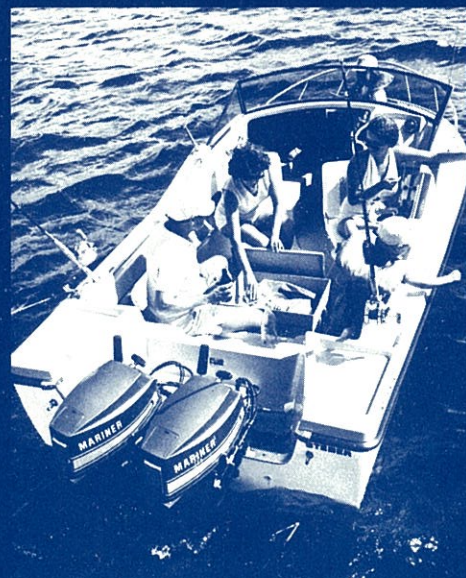
Mike Law Australian Sea Spray

### SAFETY

"... sea safety NOW sells boats — and Bruce Steber's clinker hulls are right in the forefront..."

"... like an understeering car, it is immensely safe, and very forgiving..."

Peter Webster Australian Boating



### FISHING

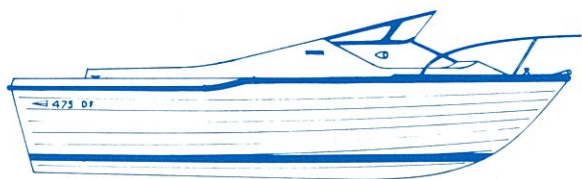
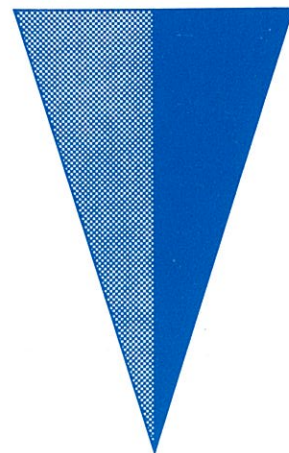
"... the cockpit offers plenty of work space, in fact, a surprising amount of work space for a 15'7" boat. The sides are just the right height with good, solid support at thigh level and the knees tuck in under the rail for maximum stability when fighting a fish..."

Ron Calcutt The Australian Angler



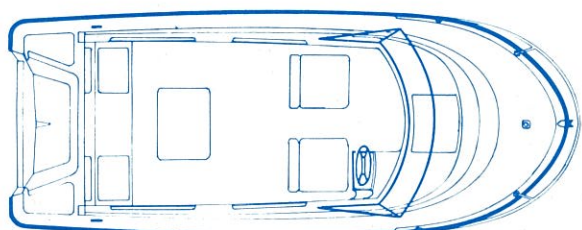
# STEBER **SERIES 475**

## DF, DELUXE FISHERMAN

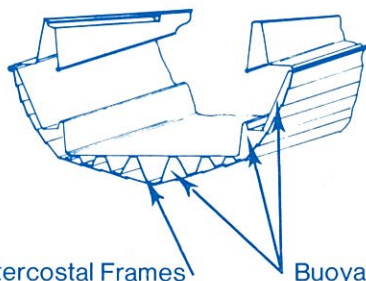


### STANDARD SPECIFICATIONS

Length 4.75 m (15'7")  
 Beam Max. 2.04 m (6'8½")  
 Beam Trans. 1.80 m (5'11")  
 Power Rating 40 to 75 HP  
 Recommended HP Rating 60/70 or twin engines to 30HP each.  
 Max. total engine weight 240 lb.  
 Motor Transom Height 50.8 cm (20 in)



CROSS SECTION THRU HULL SHOWING FIBREGLASS KEEL SYSTEM, FEATURING FULL LENGTH LONGITUDINAL INTERCOSTAL FRAMES AND COMPARTMENTED VOID SPACE BUOYANCY CHAMBERS, BOTH UNDERFLOOR AND IN TOPSIDES.



Intercoastal Frames      Buoyancy Chambers

**STANDARD EQUIPMENT** includes **EXCLUSIVE STEBER SAFETY PACK.**

Unique forward raked anti-glare windscreen, sturdy stainless steel bow rail, upholstered forward swivel seats, also upholstered removable rear bench seat, compartmentised side pockets, rod and gaff racks, rod holders, fish/ice box (fish box lid fits to floor liner), compass, navigation lights, (consisting of port & starboard & riding lights), lifejackets (4), full hardware including bow eye, bow roller, mooring cleat forward, aft cleats (2), ski hooks, anchor and 120' line, transom drainers, underfloor flotation compartments, twin sized moulded self draining motor well, access to foredeck through sliding hatch, stowage in unique mini quarter cabin, mechanical steering, full internal liner including moulded transducer well, non-skid deck and floor surfaces, five well appointed hand rails.

### Options:

Canopy, side curtains, Tonneau cover, storm cover.

### COLOURS:

Beige, Golden Yellow, Sapphire Blue, Tangarine and White.

### Colour Combinations:

Any combination of these colours may be used on hull or deck. Coloured waterline. Interior beige.

For details of your nearest Steber dealer or information on any of the pleasurecraft, phone or write to Stebercraft Pty. Ltd., P.O. Box 90, TAREE N.S.W. (065) 52 2577.

SEE YOUR STEBER DEALER NOW —